

# MONTHLY MEMBERSHIP PROGRESS REPORT

LOCATION INDIA

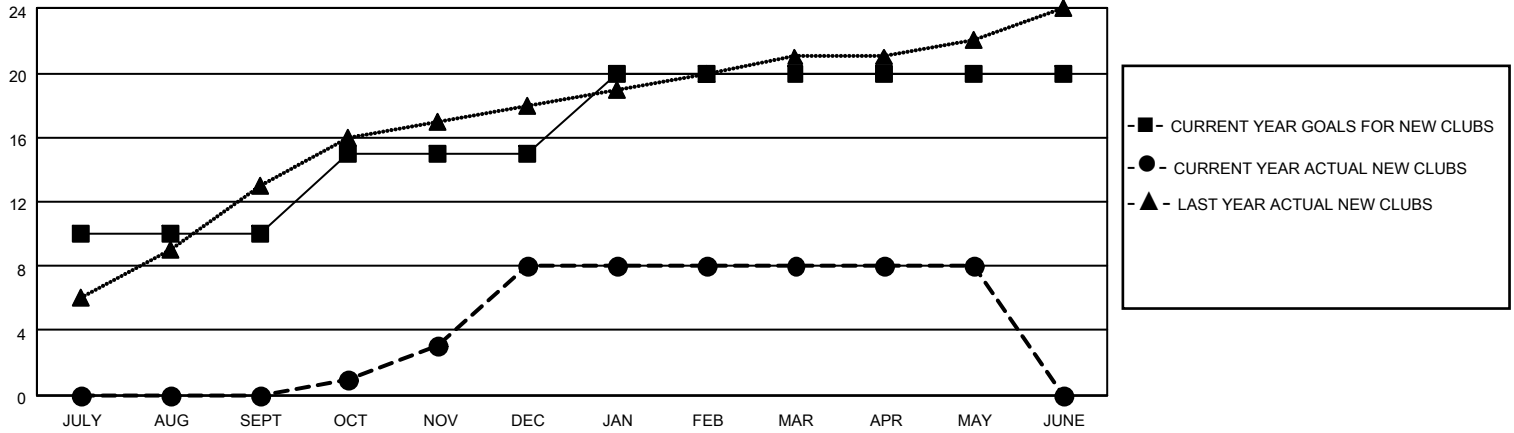
District 317 A

Results as of: 5/31/2023

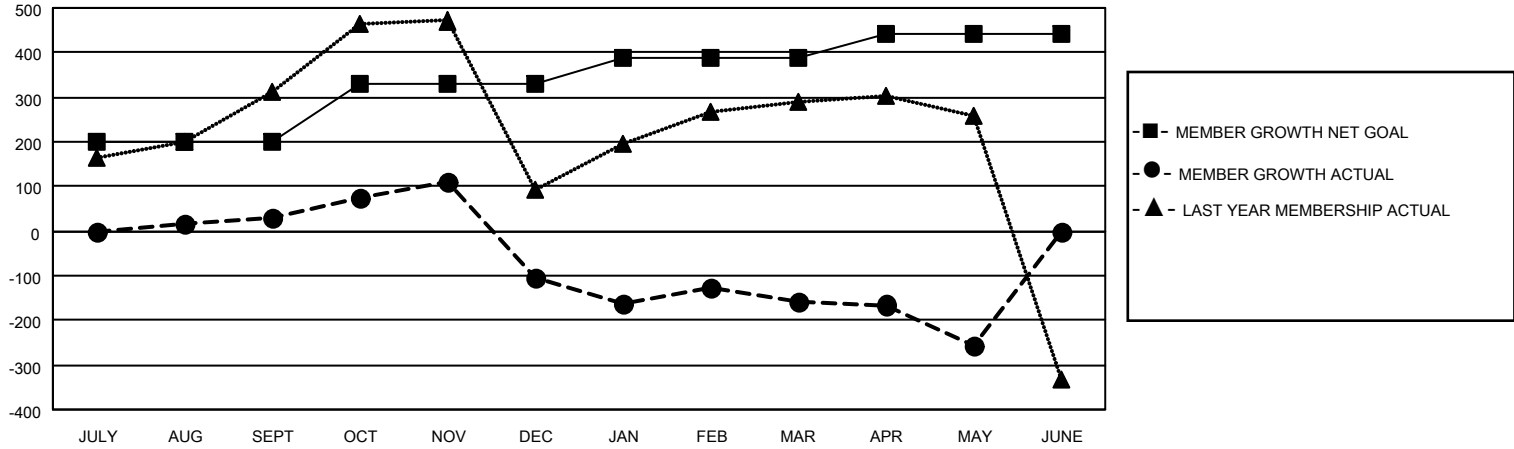
Clubs			
RESULTS FOR 2022-2023			
QUARTER	NEW CLUB GOAL	NEW CLUBS	DROPPED CLUBS
JULY/AUG/SEPT	10	0	0
OCT/NOV/DEC	5	8	9
JAN/FEB/MAR	5	0	1
APR/MAY/JUNE	0	0	0

Members			
RESULTS FOR 2022-2023			
QUARTER	MEMBER GROWTH NET GOAL	MEMBER GROWTH ACTUAL	DROPPED MEMBERS ACTUAL (including transfers)
JULY/AUG/SEPT	200	186	147
OCT/NOV/DEC	130	314	436
JAN/FEB/MAR	60	116	167
APR/MAY/JUNE	50	17	114

**GOALS AND ACTUAL NEW CLUBS CUMULATIVE**



**GOALS AND ACTUAL MEMBERS CUMULATIVE**



**DROPPED CLUBS: 10**

**97 CLUBS OF 189 ADDED 1 OR MORE NEW MEMBERS**

**GENDER DISTRIBUTION**

MALE	3,353 (65.78%)
FEMALE	1,744 (34.22%)
NON BINARY	0 (0.00%)
PREFER NOT TO ANSWER	0 (0.00%)

**DROPPED MEMBERS**

[CLICK HERE FOR CUMULATIVE MEMBERSHIP DATA](#)

DECEASED	17
CLUB CANCELLED	239
OTHER	611
<b>TOTAL</b>	<b>867</b>

TOTAL FAMILY UNIT MEMBERS 2,300

FAMILY MEMBERS PAYING HALF DUES 1,277